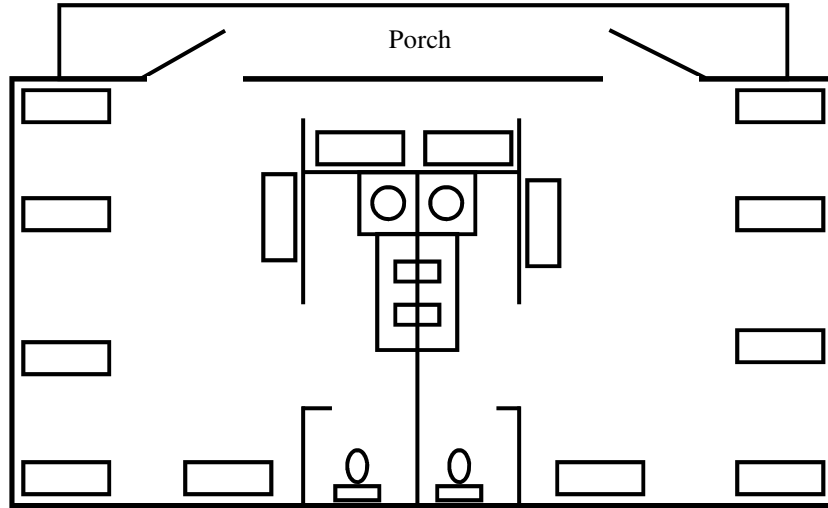




YMCA Camp Mason Cabin Layout

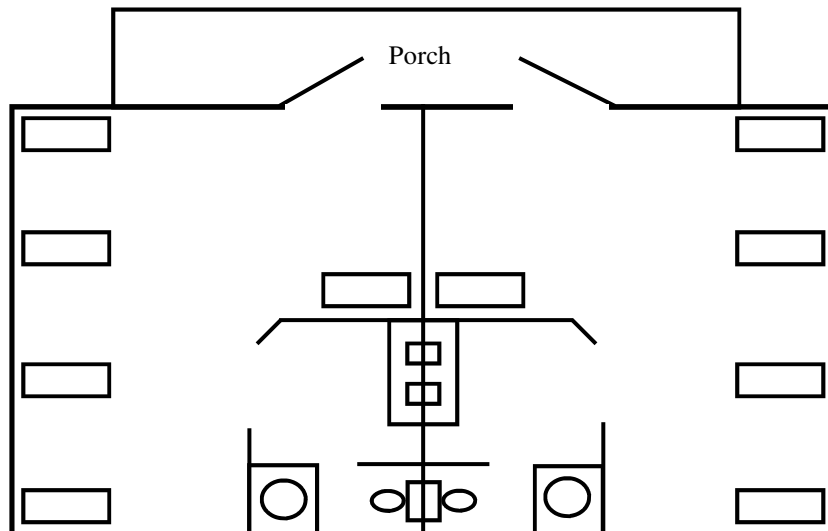
Apache Village 1 - 8

- 8 cabins in 4 duplex buildings
- Fully winterized
- Full bathrooms
- Village capacity = 112
- Recreation Lodge w/chairs, fireplace and TV/DVD



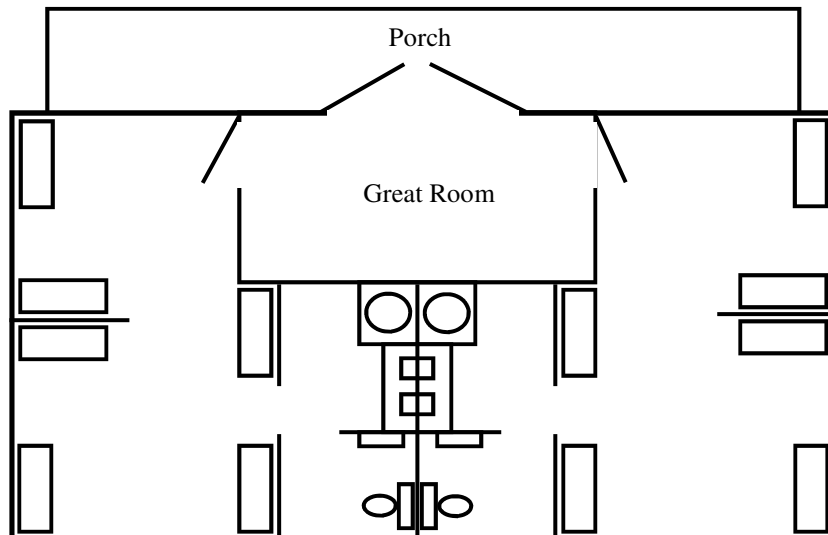
Algonquin Village 1 - 6

- 6 cabins in 3 duplex buildings
- Fully winterized
- Full bathrooms
- Village capacity = 60
- Recreation Lodge w/chairs, fireplace and TV/DVD

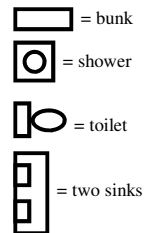


Sioux & Iroquois Village 1 - 6

- 6 cabins each in 3 duplex buildings (per village)
- Fully winterized
- Full bathrooms
- Village capacity = 72
- Two villages = 144



Key:

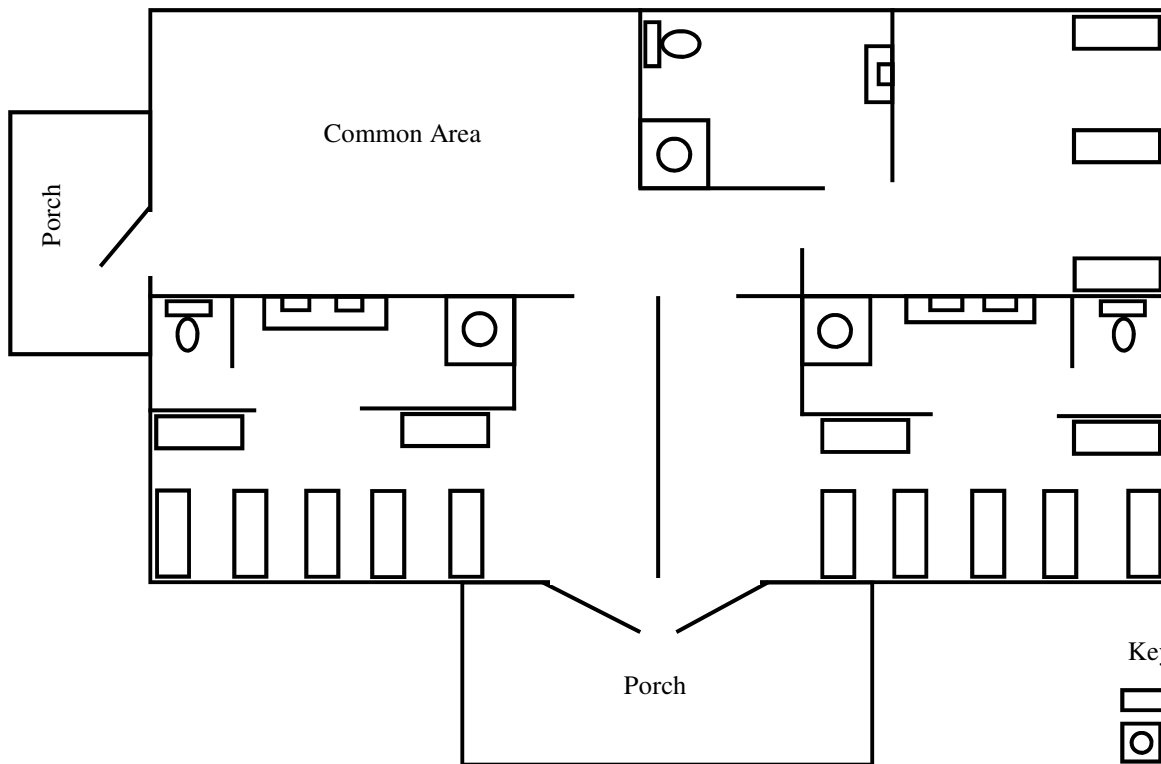




YMCA Camp Mason Cabin Layout

Hillside Lodge

- 3 bedrooms in one building
- Fully winterized
- 3 Full bathrooms
- Lodge capacity = 30
- TV/DVD, chairs, couches



Key:

= bunk

= shower

= toilet

= two sinks

Spruce Lodge

- 8 bedrooms in 1 building
- Fully winterized
- 2 Full bathrooms
- Lodge capacity = 48
- TV/DVD, chairs, couches

